



Flat 2

Gleneldon Road | | London | SW16 2AY

£1,150 Per Month



Flat 2

Gleneldon Road |
London | SW16 2AY
£1,150 Per Month

Nestled on the desirable Gleneldon Road in Streatham, this charming studio apartment offers a perfect blend of modern living and convenience. This ground floor property is available for immediate occupancy, making it an ideal choice for those seeking a swift move.

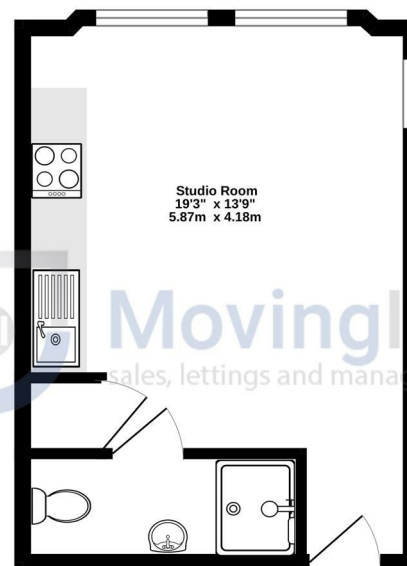
The studio layout maximises space, providing a versatile area that can easily be tailored to your personal needs. The accommodation is designed with modern living in mind, ensuring that you have all the essentials at your fingertips. The property also features a well-appointed bathroom with a shower and toilet.

Situated in a great location, this studio is surrounded by a vibrant community, with local amenities, shops, and transport links just a stone's throw away. Whether you are a young professional, or someone looking to downsize, this property presents an excellent opportunity to embrace a comfortable lifestyle in a sought-after area.

- Available immediately
- Great location
- Modern accommodation
- Bright and airy space
- Ground floor studio
- Brand new carpet
- EPC rated band C
- Close to transport links



Ground Floor
263 sq.ft. (24.4 sq.m.) approx.



Energy Efficiency Rating		
	Current	Potential
Very energy efficient - lower running costs		
(92 plus) A		
(81-91) B		
(69-80) C	69	79
(55-68) D		
(39-54) E		
(21-38) F		
(1-20) G		
Not energy efficient - higher running costs		
England & Wales	EU Directive 2002/91/EC	

Council Tax Band A
EPC Rating C

467 Norwood Road
West Norwood
London
SE27 9DJ

02087610830
dean@movinginn.co.uk
www.movinginn.co.uk

Gleneldon Road, Streatham, SW16
TOTAL FLOOR AREA: 263 sq.ft. (24.4 sq.m.) approx.
Measurements are approximate. Not to scale. Illustrative purposes only.
Made with Metropix C2025